

TRM94 : 3RACK + DTVRR13 + DTVDM4F



COMPACT HEADEND
4 INPUTS - 8 SATELLITE RECEIVERS
1 USB OR HDMI INPUT
FLEXIBLE QUAD COFDM/QAM MODULATOR

- Four full band tuners, SCR-dCcs compatible
- Each input can feed 8 demodulators
- 8 x DVBS/S2/S2X/multistream demodulators
- 1 USB input for playing .ts files or 1 HDMI input to connect an external source
- 4 not adjacent (flexible) output channels (DVB-T/C)
- Very compact module
- Made in Belgium



DTVIFACE SNAPSHOT

DTVIFACE 326 - ANTRON(c) - setup 571 - (USB)

RR13 S39H3F14E
DM4F S23H6F4E

HDMI 11:16:32
GMT: +2

9000 kb/s
MPEG 192 Kb/s

S.I.D.: 1 Name: Channel A
08:00 10:00

Rate: 150 CAT Mix +0 EMM

N.I.T.
Vers.: ONID: NID: LCN:
5 8442 8442 EACEM
Network name: NoName

1 2 3 4
Freq. (kHz): 474000 482000 490000 498000
T.S. Id.: 100 101 102 103
Const.: Bandwidth: F.E.C.: Guard Int.:
QAM64 8 Mhz 7/8 1/32
Level Att. -5dB
70554 kb/s

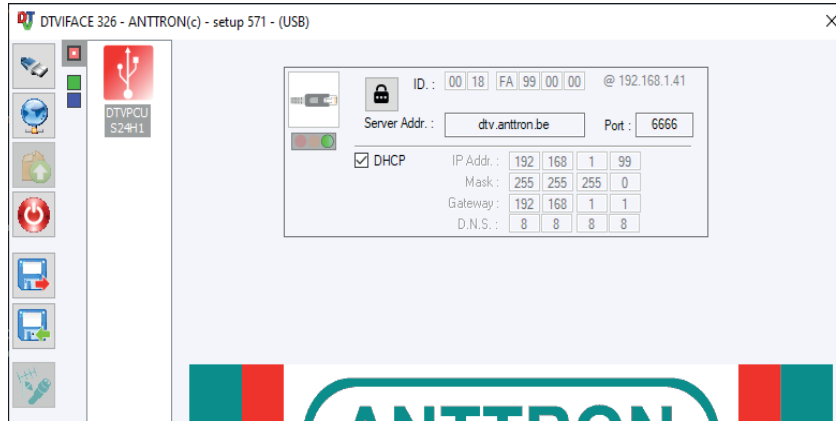
Watchdog
Remove CAT/EMM

S.I.D.	Service name	UNCRYPT	OUT(18)	LCN	N.SID
A 12003	RTL Television				12003
A 12004	RTL Regional NRW				12004
A 12040	SUPER RTL				12040
I 1	Channel A				1
A 12005	RTL HB NDS				12005
A 12030	TOGGO plus				12030
A 12061	NITRO				12061
A 12006	RTL Bayern				12006
A 12020	RTLZWEI				12020
A 12060	VOX				12060
A 12091	TOGGO Radio				12091
B 17500	SAT.1				17500
B 17504	SAT.1 Gold				17504
B 17505	Pro7 MAXX				17505
A 12008	DTI HH SH				12008

*Specifications, descriptions and photographs are subject to change without notice.

*The products comply with the requirements of the CE mark. The declaration of conformity is available upon request.

DTVIFACE SNAPSHOT



TECHNICAL SPECIFICATIONS:

INPUT		
SAT inputs (x4) (wide band capture)	Frequency	950-2150 MHz
	Input level	-70 dBm to -5 dBm
	LNB supply	13/18V - Tone - DiSEqC (300mA each input)
Dmodulators (x8)		
DVB-S	Modulation - symbol rate	1...45 MSps
	System	QPSK
DVB-S2	Modulation - symbol rate	1...45 MSps
	System	QPSK, 8PSK, 16APSK, 32APSK, CCM, ACM, VCM, Single transport stream, Multiple transport stream Generic Stream Encapsulation
DVB-S2X	System	QPSK, 8PSK, 8APSK-L, 16APSK, 16APSK-L, 32APSK, 32APSK-L, 64APSK-K, 64APSK-L
HDMI input : Video	Resolutions	480P - 576P - 720P - 1080i - 1080P
	Compression	H.264 - bitrate 5-15 Mb/s
HDMI input : Audio	Audio rate	HDMI (32kHz / 44.1 kHz / 48 kHz)
	Compression	AAC-LC / MPEG1-L2 - bitrate 128-320 Kb/s
USB input	Format	USB3.0 - MPEG4 transport stream
OUTPUT		
4 FLEXIBLE CHANNELS		
	Number of channels	4 free selectable in the VHF-UHF frequency band
	Output level	> 90 dBµV (adjustable in DTViface)
	Insertion loss	< 2 dB
DVBT/COFDM	Output frequency	170-230 MHz + 470-862 MHz
	FEC	1/2, 2/3, 3/4, 5/6, 7/8
	Guard Interval	1/4, 1/8, 1/16, 1/32
	Mode - MER	2K - > 35 dB
DVBC/QAM	Output frequency	50-862 MHz
	Constellation	16,32,64,128,256 QAM (EN 300 429)
	Symbol Rate	4 - 6.96 Mb/s
	MER	> 39 dB
DVB Processing		TsID, NIT version, ONID, NID, Network Name, LCN
CONSUMPTION		
		< 25 Watt